

# EOC High School

# Roadmap to Reopening

Brian Grossenburg



# Disclaimer

**This plan is designed to protect the community IF the school is able to serve all students or some students in a traditional classroom setting. The plan does not imply that the school will open within a traditional manner.**

**The plan allows for a continuum services which MAY include traditional classroom settings, distance learning modalities, packets with support or a blend of the options. Given the fluidity of the public health situation, this will be a living document that will be updated based on the most current information and allows school leadership to remove service options as needed based on the school's public health situation.**

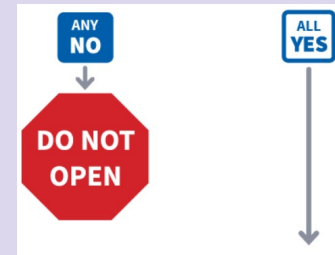
## CDC Decision tree guidelines

### Will reopening be consistent with applicable state and local orders?

YES Currently, each LEA may determine the extent to which a school may open. Traditional classroom services pushed back to August 17, 2020. (Either Board or School Leadership)

Things to Consider:

1. What are other LEA's planning?
2. What guidance do local health authorities provide?
3. To what degree can the school provide instruction?



# The Options

## **TRADITIONAL CLASSROOM**

Some or all students would return to school in a traditional way with standard operating procedures where the school would adhere to health and safety practices as best as possible.

## **PACKETS WITH SUPPORT**

Students would have the option to complete course work through completing packets independently.

Students may schedule small group and independent tutoring sessions with teachers. Students would need to meet dead-lines for packets.

## **DISTANCE LEARNING**

Students remain at home and school would provide equipment (excluding internet) and materials.

## **ONLINE LEARNING**

Students would have the option to enroll in our on-line classroom (Buzz) and complete courses independently with very little assistance within the quarter time frame.

## **BLENDED**

A combination of traditional classroom, packets with support, online learning. Students would have the option to select from the four options as desired.

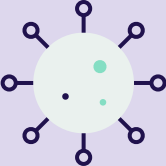
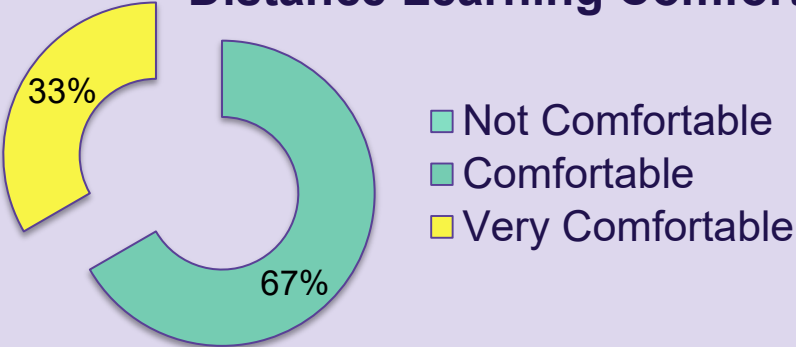
# A look at Other LEAS

1. Yuma Union High School District hasn't made any decisions yet.
2. Somerton School District has elected to use a phase approach based factors to include County Risk Factor.  
**Phase I: All Remote**      Phase 2: Hybrid      Phase 3: All at School
1. Aztec High School is hoping to go split day.
2. Yuma Elementary School District One is still gathering information and informing families that they will be 100% on learning.
3. Crane School District is providing 2 options:  
A. Online      B. Hybrid (Half attend 2 days and Other Half attend 2 days)
4. Harvest Prep hasn't made any decision. Right now they are requiring students with symptoms to be tested before entering campus.
5. San Pasqual School District hasn't made any decision. They are in the process of gathering community survey results.
6. Desert View Academy No information gathered.

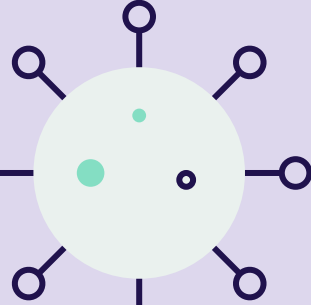
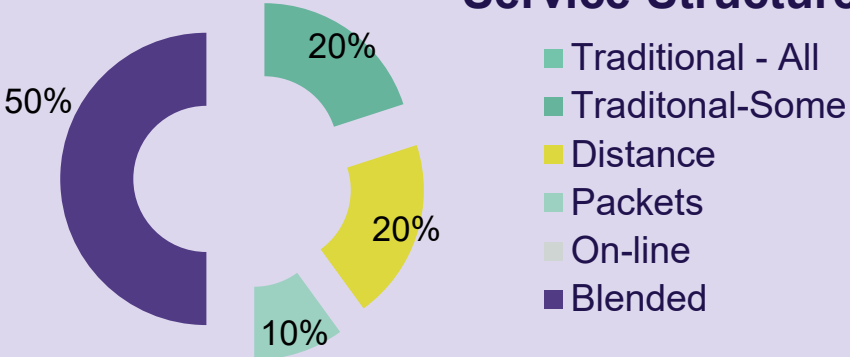
# Staff Service Delivery Perceptions



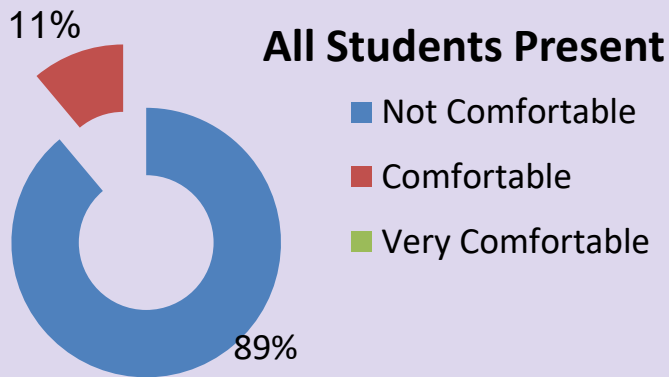
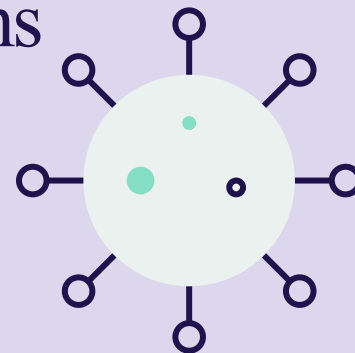
## Distance Learning Comfort



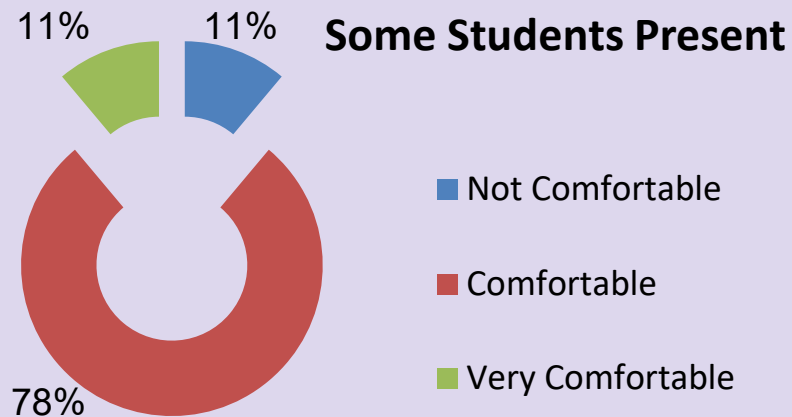
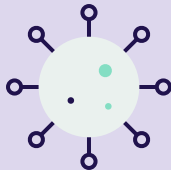
## Service Structure



# Staff Service Delivery Perceptions

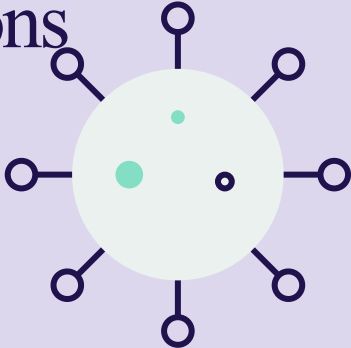


- Not Comfortable
- Comfortable
- Very Comfortable

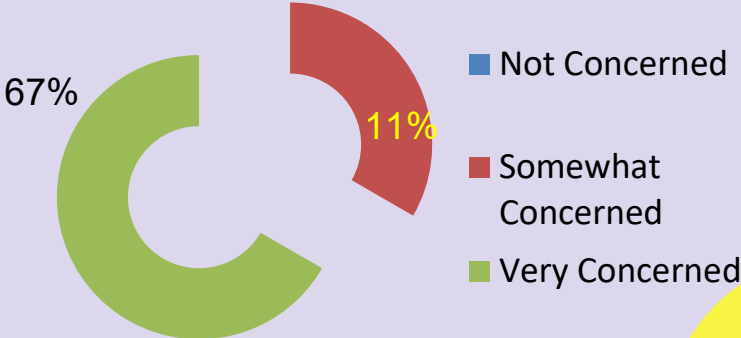


- Not Comfortable
- Comfortable
- Very Comfortable

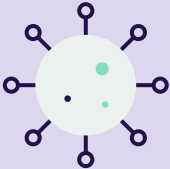
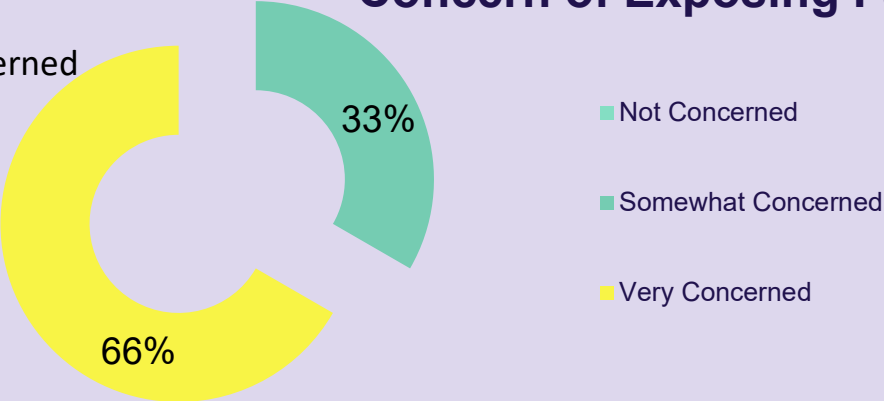
# Staff Service Delivery Perceptions



## Concern of Contracting



## Concern of Exposing Family

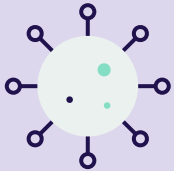
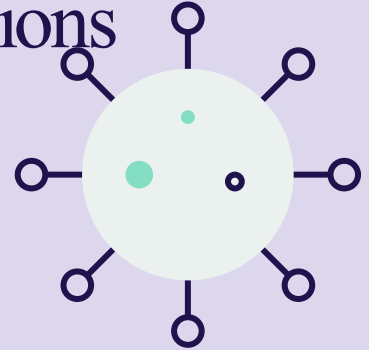
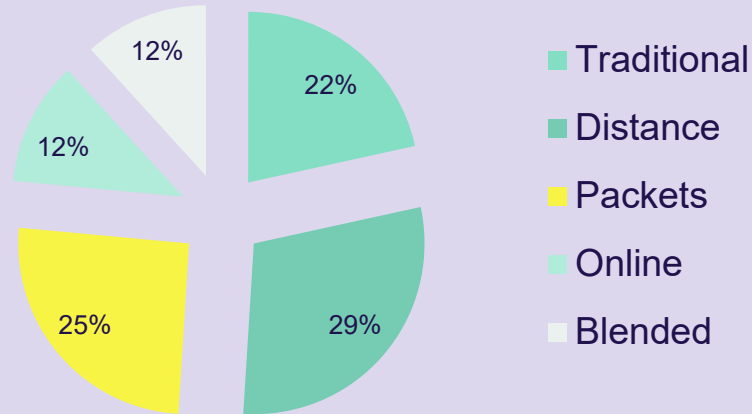




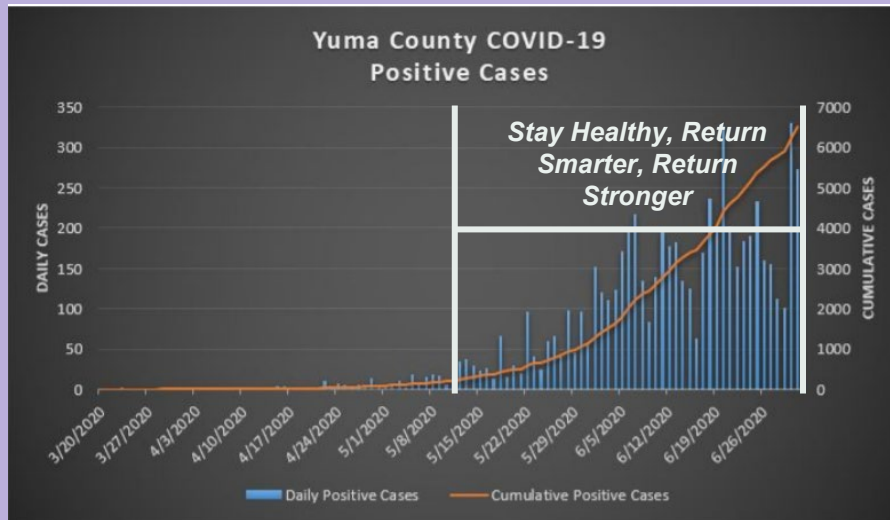
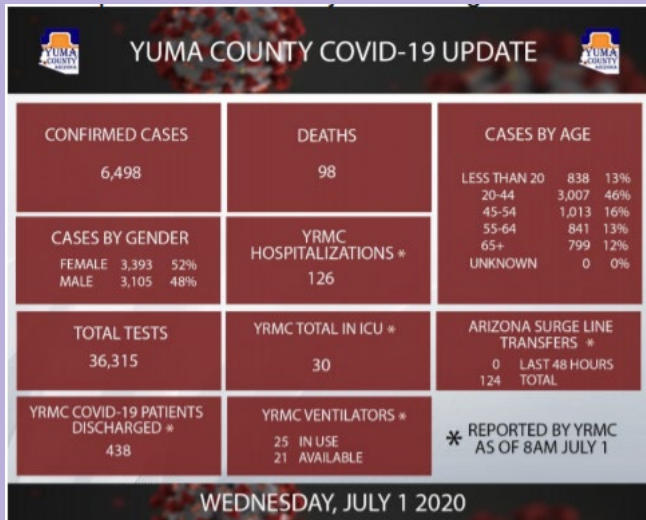
# Student Service Delivery Perceptions

93 surveys were sent out and 51 were returned (55%)

## Student Preferences



# Yuma, Arizona



# Yuma County Public Health Services- Report 2020

1. Quarantining inside is preferable to quarantining outside due to escalated dehydration and the potential to eliminate false indications. Full time monitoring is required.
2. Screening location can be established at the front entrance with two screening stations.
3. The kitchen can be used to isolate no more than 4 students if barriers are at least 6' high. Health department has some to borrow temporarily if we can not purchase.
4. Meals will either need to be grab and go in a different area or served in classrooms and socially distanced open areas.
5. It is not possible to keep same group of students together or move teachers from room to room due to student demographics and limited class sections.

## Yuma County Public Health Services- Report 2020

6. It is not possible to alter release times due to limited class sections.
7. All students should enter through the main entrance and exit by exterior doors. The lab should exit by the East door. This will keep movement one directional.
8. Install floor markings to establish directional movement.
9. If a student or staff is identified with a positive case, the school facility closes for a minimum of 5 days to clean, disinfect, and track.
10. Communication systems and notices meet guidelines.
11. Preparations for continued instruction and learning are planned for short-term closures.

# CDC Decision tree guidelines

Is the school ready to protect children and students at risk for severe illness?

## Facility:

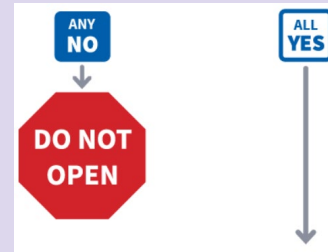
- Kitchen or outside breezeway are the only areas possible to screen and isolate students
- Regular classrooms support 10 to 12 students each
- Special Education supports 4 students.

## Student Population:

- Currently have items and equipment to socially distance and sanitize.
- Currently some interest in returning to school.

## Challenges:

- Approximately 8% - asthmatic
- 1% immune deficiency
- 6% Diagnosed Panic Disorders



# CDC Decision tree guidelines

Are you able to screen students and students upon arrival for symptoms and history of exposure?

## Challenges With the Kitchen:

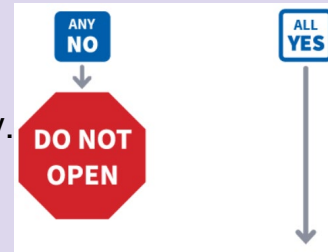
- Sick and well students would be mixed
- Only isolate 3 sick students
- Food safety

## Challenges With the Outside:

- Heat
- Monitoring

## Other Challenges:

1. If we screen in cars, part of the agency and business driveways would need to be “controlled traffic” for part of the day.
2. Different tracing protocol for YCAT students.
3. “Cool Down” stations need to be adequate enough to eliminate false symptomology.
4. Staff allocation to manage sick students is limited in number and qualifications
5. Timely pickup of ill students.

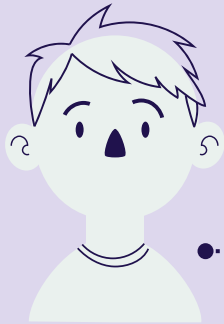


# CDC Decision tree guidelines

Are recommended health and safety actions in place?

## Healthy Practices

Plans are established for hand washing, face coverings, social distancing and screening



## Cleaning, Disinfecting, Ventilation

Plans, schedules and equipment are in place to C/D contact areas 4x daily

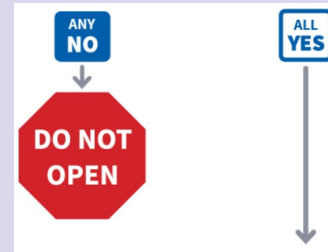


Six Feet



## Training of Staff, Students and Community

- Training plan will use trainings from CDC, YCPHS
- Trainings and information will be accessible

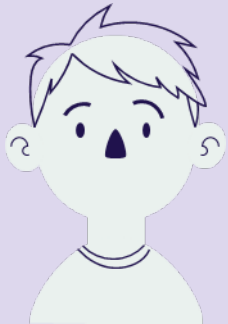


# CDC Decision tree guidelines

Is ongoing monitoring in place?

## Policy Adaptations

Policies and communications encourage anyone who is sick to stay home



## Monitoring of Sick Students and Staff

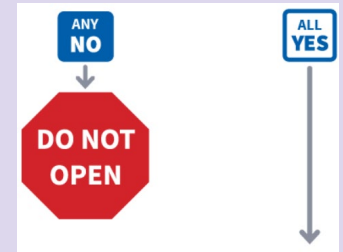
Plans, schedules and equipment are in place to C/D contact areas 4x daily

Currently, staffing does not accommodate long term absences of more than one teacher.

Special Education Teacher also will be serving as principal

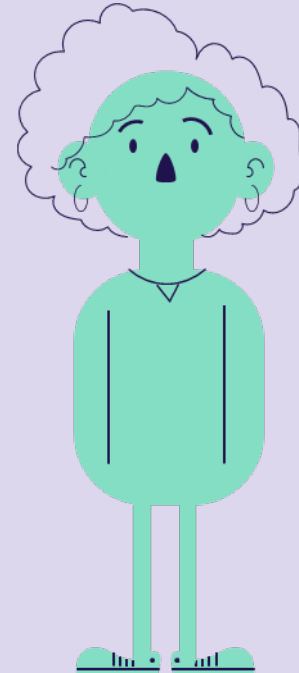
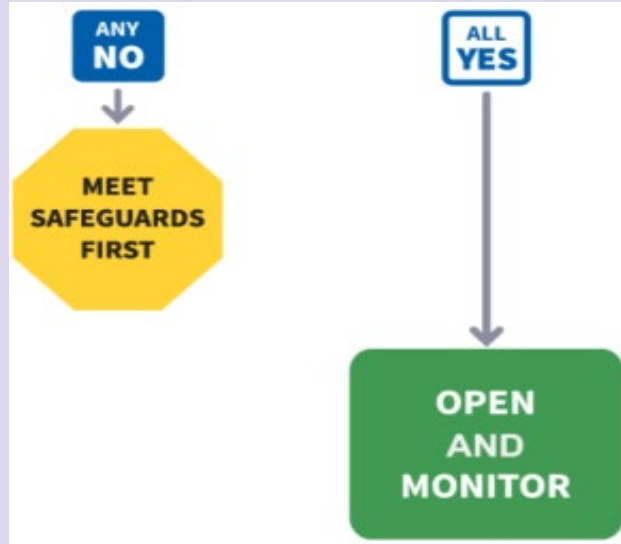
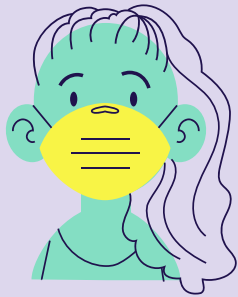
## School Authority

School leadership will have the ability to close the school and return to distance learning platforms if needed





# CDC Decision tree guidelines



# ADE Decision Guidance

## All Students in Physical Buildings

- LEA Meets CDC Guidelines
- None to minimal local cases
- Implemented COOP plan
- Implemented Communication Plan
- Implemented screening for staff, families and students
- Plan for medically fragile staff and students.

## Some Students in Physical Building and Some Remote

- All elements of previous category; except
- Minimal to moderate local cases; and
- Communicated screening, safety, and educational expectations to staff and families.
- Plan is implemented to bridge the digital divide

## Distance Learning with Option to Return and Close Again

- LEA is not able to or will lose ability to meet CDC Guidelines
- Substantial local cases
- Implemented Emergency Distance Learning Plan
- Communicated screening, safety, and educational expectations to staff and families.
- Plan is implemented to bridge the digital divide

# Current Status of Reopening

01

**Facilities:**Continually C/D/S;  
Tech Infrastructure Improved;  
Signage is posted, Social Distancing  
Markings will be put in place, Chairs  
and tables are stored

02

**Enrollment:**Agreements for Safety,  
Instruction, Laptops added;  
Developing a method of remote  
enrollment and remote access to  
orientation videos  
><https://www.yuma.org/Registration>

03



**Student and Community Safety:**  
Masks, Face Shields and Hand  
Washing Stations are ordered;  
Procedures are in place for screening  
and sickness of students and staff;  
Virtual Counseling

04

**Policies:**Excused absences  
accommodate lack of  
documentation; Removed  
rewards for perfect  
attendance; New expectations  
added



05

**Instructional Readiness:**Ordered  
GoToMeeting; G Suite Enterprise;  
Individual Student Chromebooks  
Planned Fiber optics; Media server; HD  
Cameras w/Audio; Surface Pros w/  
Smart TVs for teachers; PD

06

**Communication and Connection:**  
Surveys mailed and made public;  
Phone calls made; letters mailed;  
Facebook Notifications



# Service Delivery Options



At this time, it is not safe to provide services to all students in a traditional sense.



With careful planning and teaching safe behaviors, the school can provide services to between 50 and 60 students in a traditional manner.

The school can provide all students with the following options:



- Distancing Learning



- Packets with Support



- On-line School



- Blend of four options

# Split Week Bell Schedule

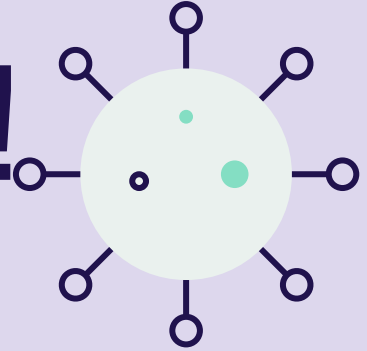
Option separates students equally between the days of the week on a traditional schedule. Friday becomes a Student Support day.

| <b>Group A: Monday-Tuesday</b>                 |               |
|--|---------------|
| <b>Group B: Wednesday-Thursday</b>             |               |
| ACTIVITY                                       | TIME          |
| Social Distance Breakfast and Student Check-in | 7:40 - 8:10   |
| Period 1                                       | 8:15 - 9:38   |
| Period 2                                       | 9:45 - 11:10  |
| Social Distance Lunch                          | 11:10 - 11:35 |
| Period 3                                       | 11:35 - 1:05  |
| Period 4                                       | 1:12 - 2:35   |
| Student Support/Planning                       | 2:40 – 4:00   |

| <b>Friday</b>  |             |
|--|-------------|
| ACTIVITY   | TIME        |
| Social Distancing Breakfast and Student Check-in             | 7:40 - 8:10 |
| Student Support  | 8:15-2:00   |
| Lunch – Grab and Go  | 2:01        |
| Staff Meetings/Professional Development/Grading and Planning | 2:30 – 4:00 |

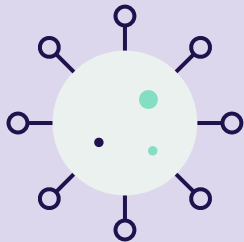


# THANKS!



Do you have any questions?

Brian Grossenburg  
[bgrossenburg@ypic.com](mailto:bgrossenburg@ypic.com)  
928-329-0990 ext 4001



CREDITS: This presentation template was created by [Slideify](#), including icons by Flat icon, and infographics & images by Freepik

# ALTERNATIVE RESOURCES



# ALTERNATIVE RESOURCES

