

EDUCATIONAL OPPORTUNITY CENTER CHARTER HIGH SCHOOL

3834 W. 16th Street, Yuma, AZ 85364

Meeting Link: <https://global.gotomeeting.com/join/691706309>

Access Code: 691-706-309

Phone: +1 (669) 224-3412

July 8, 2020

8:00 a.m.

MINUTES

I. CALL MEETING TO ORDER

Steven M. Miller called the meeting to order at 8:05 a.m.

II. PLEDGE OF ALLEGIANCE

Steven M. Miller led the Pledge of Allegiance.

III. ROLL CALL

The roll was called, and those present and absent were:

Members Present:

Judith Castro (Phone),
Steven M. Miller,
Antonio Zuniga (Phone)

Member Absent:

Maria P. Vasquez

Thereby, a quorum was established.

Staff Present:

Brian Grossenburg, Principal
Nidia Herrera, Executive Director
Beatriz Aguilar, Clerk of the Board

Guest:

Gary Gammel, YPIC
Martha Camacho, YPIC
Patrick Goetz, YPIC
Maria Chavoya, WDB Chair

IV. CALL TO THE PUBLIC

There were no comments from the public.

V. APPROVAL OF MINUTES

Steven M. Miller asked for a motion to accept the minutes from the June 10, 2020 meeting. Antonio Zuniga moved to approve the minutes from the meeting of June 10, 2020; second by Judith Castro. The motion passed.

VOICE VOTE: The motion carried 3-0

VI. SCHOOL PRINCIPAL'S REPORT

Brian Grossenburg reported the following:

A. Estimated Counts Report

Principal, Brian Grossenburg reported estimated counts are at 87.

B. Virtual Tour of the EOC Charter High School

Principal, Brian Grossenburg presented a PowerPoint on a Virtual Tour of the EOC Charter High School. PowerPoint is attached.

During the presentation Judith Castro asked how many students will be in a classroom. Mr. Grossenburg replied 8 to 10 students in a regular classroom and about 12 students in the larger classrooms.

C. Re-Open and Re-Entry Plan Presentation

Principal, Brian Grossenburg presented a PowerPoint on Roadmap to Reopening. PowerPoint is attached.

During the presentation Judith Castro commented that the blended option would be the best. Students would have the opportunity to do work one on one during certain days of the week and online learning other days. Judith Castro also asked if the school is utilizing google classroom. Mr. Grossenburg replied yes, the school is actually using Google Suite. Google provides trainings and trainings can also be found in YouTube.

During the presentation Steven M. Miller asked the reason for staff not preferring all students present. Mr. Grossenburg replied the staff's concern of contracting the virus and exposing their family.

During the presentation Steven M. Miller asked if the technology problem is the same as before. Mr. Grossenburg replied there has not been another technology survey with this student population and the technology limitations are consistent.

During the presentation a conversation took place regarding the challenge of students being picked up from school as soon as symptoms are identified.

During the presentation Antonio Zuniga asked why did the Special Education Teacher resign. Mr. Grossenburg replied the teacher voluntarily resigned.

During the presentation Judith Castro commented there should be a plan in place in case a teacher gets infected with the virus. Judith Castro asked if the school has the staff to make sure the students are taking all precautionary measures, checking temperatures and social distancing. Mr. Grossenburg replied yes.

D. Next Meeting Date: Wednesday, August 12, 2020, at 8:00 a.m. at the Martin Luther King Center 300 S. 13th Avenue, Yuma, AZ 85364.

VII. CONSENT DISCUSS / ACTION ITEMS

A. Student Activities Account for Educational Opportunity Center Charter High School for the period of June 30, 2020, in the amount of \$4,764.42.

Steven M. Miller asked for approval of the consent item as presented.

Judith Castro moved to accept the consent item as presented; seconded by Antonio Zuniga. The motion passed.

VOICE VOTE: The motion carried 3-0

VIII. DISCUSSION / ACTION ITEMS

A. Expenditures for the Educational Opportunity Center Charter High School for the period ending June 30, 2020, in the amount of \$946,904.

Nidia Herrera reported that expenses are at 98%, and are at 100% of the school year.

Steven M. Miller asked for a motion to approve the Expenditures for the Educational Opportunity Center Charter High School for the period ending June 30, 2020 in the amount of \$946,904.

Antonio Zuniga moved to approve the Expenditures for the Educational Opportunity Center Charter High School for the period ending June 30, 2020; seconded by Judith Castro. The motion passed.

VOICE VOTE: The motion carried 3-0

B. Student Fee Schedule

Steven M. Miller asked for a motion to approve the Student Fee Schedule.

Judith Castro moved to approve the Student Fee Schedule; seconded by Antonio Zuniga. The motion passed.

VOICE VOTE: The motion carried 3-0

C. Public Hearing Pursuant to A.R.S § 38-431.02 to allow Public Comment on the Proposed FY 2020-2021 budget for the Educational Opportunity Center Charter High School

There were no members of the public present for the Public Hearing on the Educational Opportunity Center Charter High School FY 2020-2021 Annual Budget.

D. Adopt Budget for FY 2020-2021

Steven M. Miller asked for a motion to approve the Budget for FY 2020-2021 in the amount of \$1, 044,737.

Antonio Zuniga moved to approve the Budget for FY 2020-2021; seconded by Judith Castro. The motion passed.

VOICE VOTE: The motion carried 3-0

IX. OTHER INFORMATION OR DISCUSSION ITEMS

There was no Other Information or Discussion Items.

X. GOOD OF THE ORDER

There were no comments for the Good of the Order.

XI. ADJOURNMENT

Steven M. Miller asked for a motion to adjourn the meeting.

Antonio Zuniga made the motion which was seconded by Judith Castro. The motion passed, and the meeting was adjourned at 9:10 a.m.

VOICE VOTE: 3-0

Respectfully submitted by Beatriz Aguilar, Clerk of the Board.



Virtual Tour for Pandemic Readiness

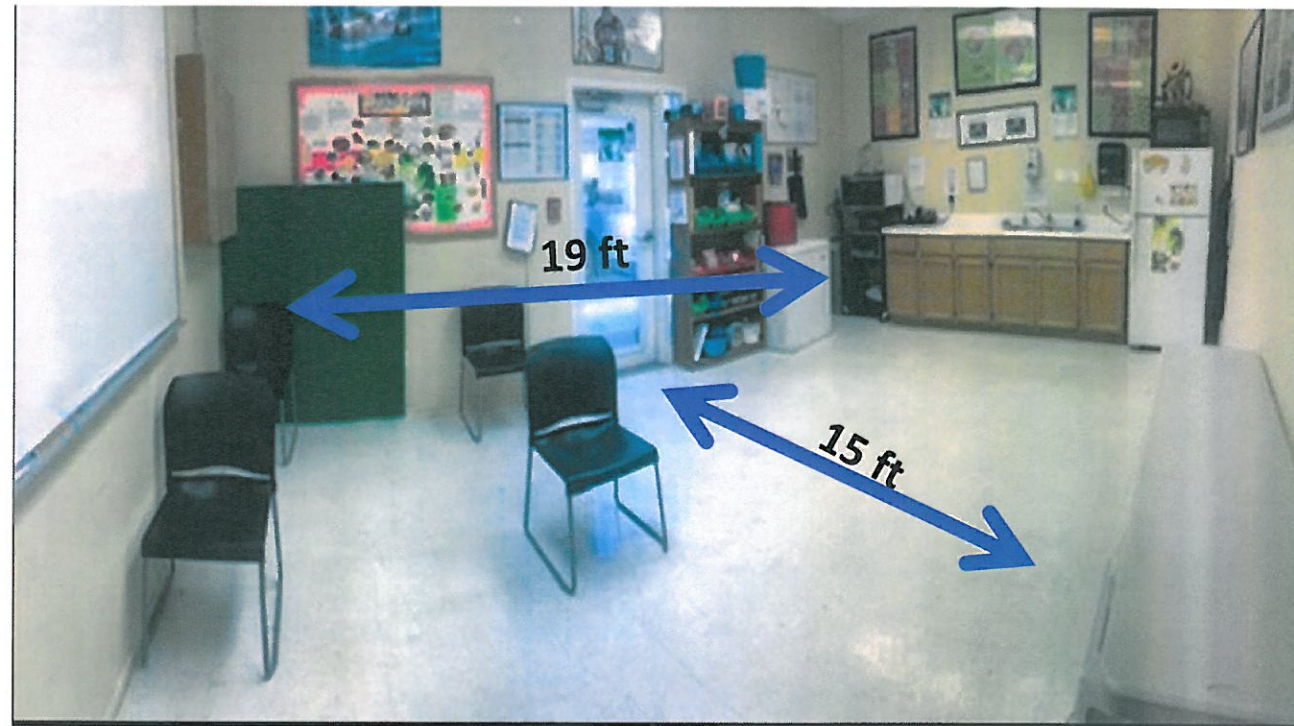
Outside Common Area

- Potentially used for screening and quarantining.
 - climate is the main challenge



Kitchen

- Potentially used for screening and quarantining.
 - square footage is main challenge
 - Meal staging area



Hallway

- One directional traffic is not possible
- Choke point by science and women's restroom.



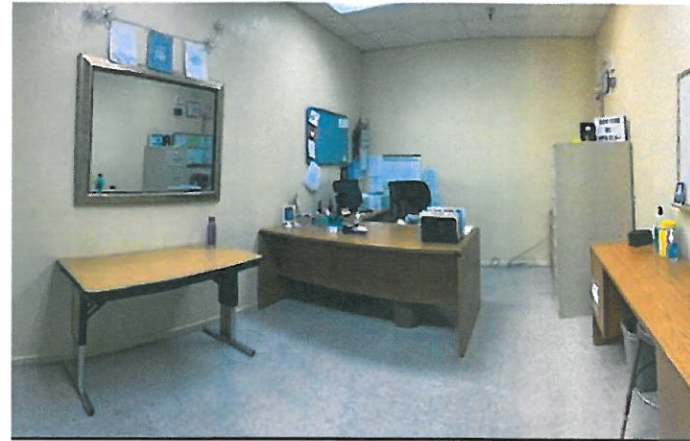
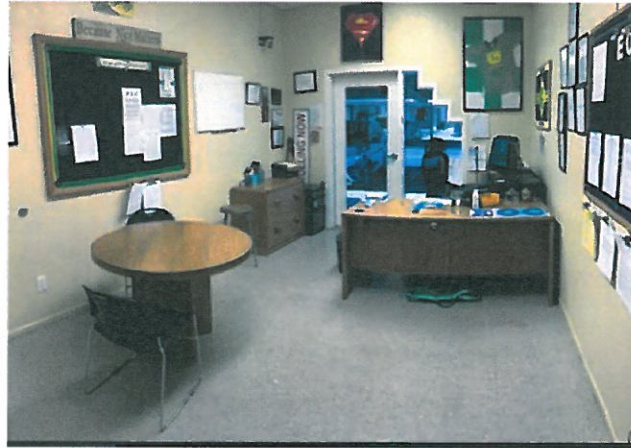
Classrooms

- Removed chairs and non-essential furnishings
- Large classrooms - 21 x 22
- Small classrooms – 21 x 18
- Computer Lab and Special Education - 20 x 15



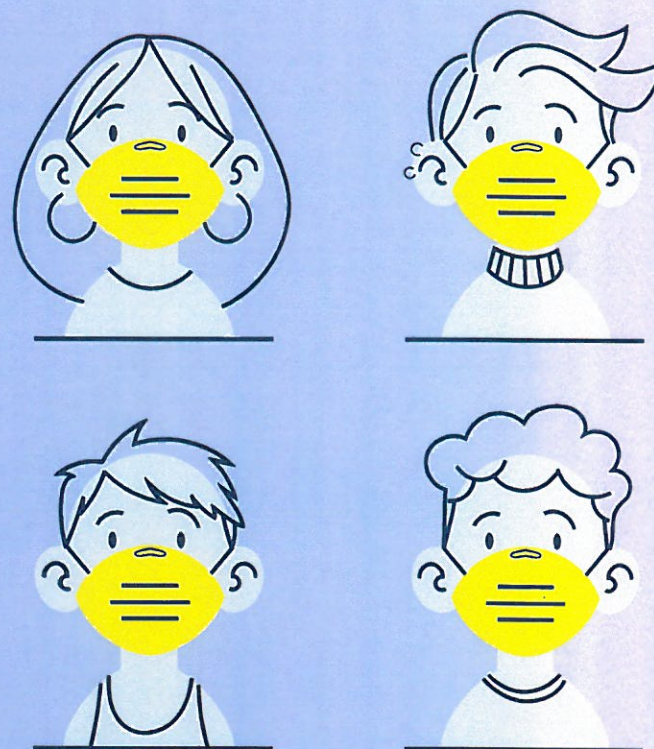
Offices

- Removed chairs and non-essential furnishings
- 11 x 14



EOC HIGH SCHOOL ROADMAP TO REOPENING

Brian Grossenburg



A large white rectangular area on the right side of the page, containing several horizontal lines for writing, suggesting a space for notes or a checklist.

DISCLAIMER

This plan is designed to protect the community IF the school is able to serve all students or some students in a traditional classroom setting. The plan does not imply that the school will open within a traditional manner.

The plan allows for a continuum services which MAY include traditional classroom settings, distance learning modalities, packets with support or a blend of the options. Given the fluidity of the public health situation, this will be a living document that will be updated based on the most current information and allows school leadership to remove service options as needed based on the school's public health situation.

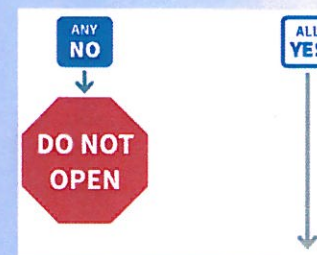
CDC DECISION TREE GUIDELINES

Will reopening be consistent with applicable state and local orders?

YES- Currently, each LEA may determine the extent to which a school may open. Traditional classroom services pushed back to August 17, 2020. (Either Board or School Leadership)

Things to Consider:

1. What are other LEA's planning?
2. What guidance do local health authorities provide?
3. To what degree can the school provide instruction?



THE OPTIONS

TRADITIONAL CLASSROOM

Some or all students would return to school in a traditional way with standard operating procedures where the school would adhere to health and safety practices as best as possible.

PACKETS WITH SUPPORT

Students would have the option to complete course work through completing packets independently.
Students may schedule small group and independent tutoring sessions with teachers.
Students would need to meet dead-lines for packets.

DISTANCE LEARNING

Students remain at home and school would provide equipment (excluding internet) and materials.

ONLINE LEARNING

Students would have the option to enroll in our on-line classroom (Buzz) and complete courses independently with very little assistance within the quarter time frame.

BLENDED

A combination of traditional classroom, packets with support, online learning. Students would have the option to select from the four options as desired.

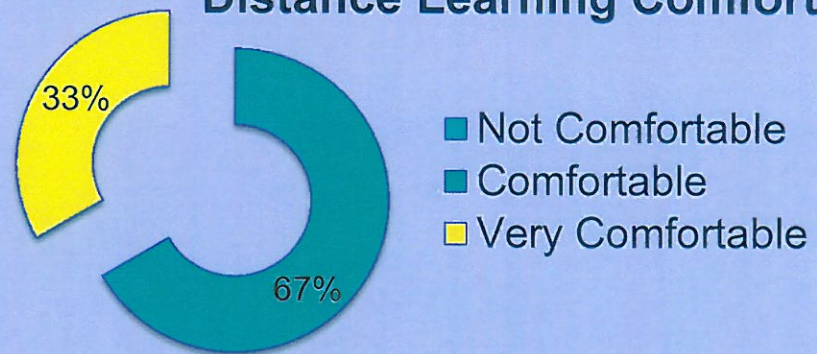
A LOOK AT OTHER LEAS

1. Yuma Union High School District hasn't made any decisions yet.
2. Somerton School District has elected to use a phase approach based factors to include County Risk Factor.
Phase I: All Remote Phase 2: Hybrid Phase 3: All at School
1. Aztec High School is hoping to go split day schedule.
2. Yuma Elementary School District One is still gathering information and informing families that they offer 100% on-line learning.
3. Crane School District is providing 2 options:
A. On-line B. Hybrid (Half attend 2 days and Other Half Attend the Other 2 days)
4. Harvest Prep hasn't made any decision yet. Right now they are requiring students with symptoms to be tested before entering campus
5. San Pasqual School District hasn't made any decisions yet. They are in the process of gathering community survey results.
6. Desert View Academy – No information gathered.

STAFF SERVICE DELIVERY PERCEPTIONS



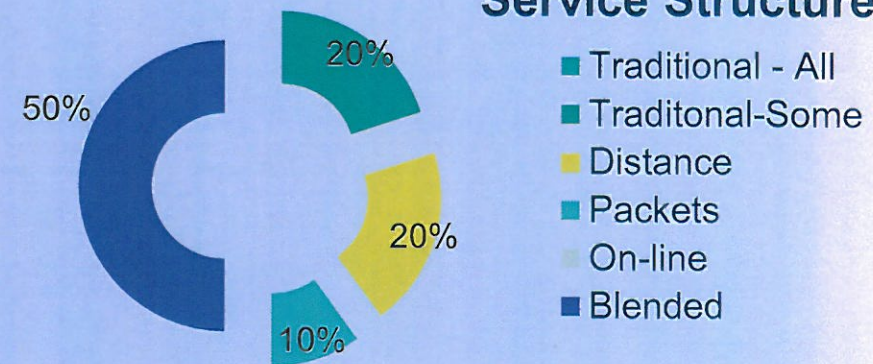
Distance Learning Comfort



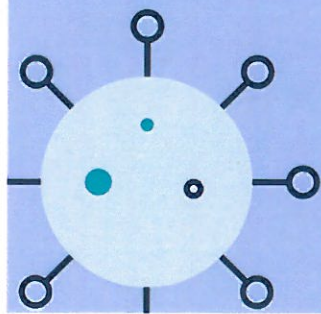
- Not Comfortable
- Comfortable
- Very Comfortable



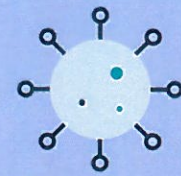
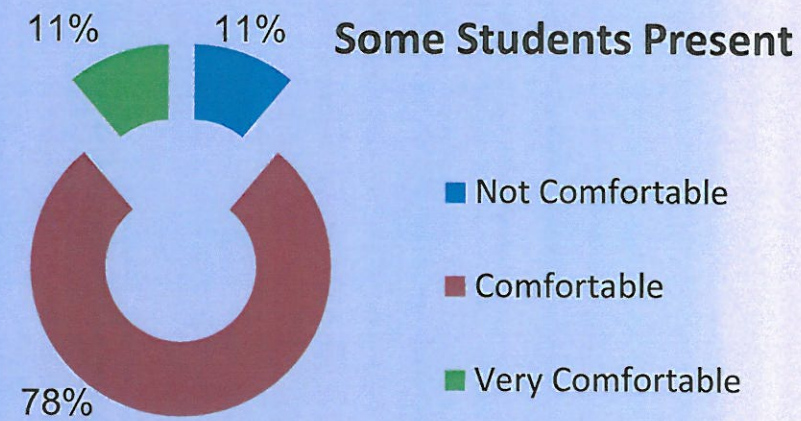
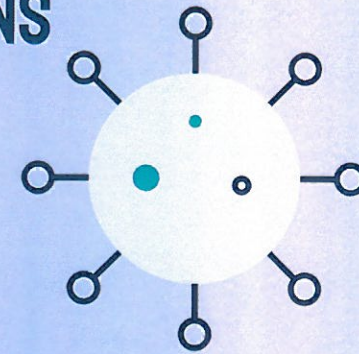
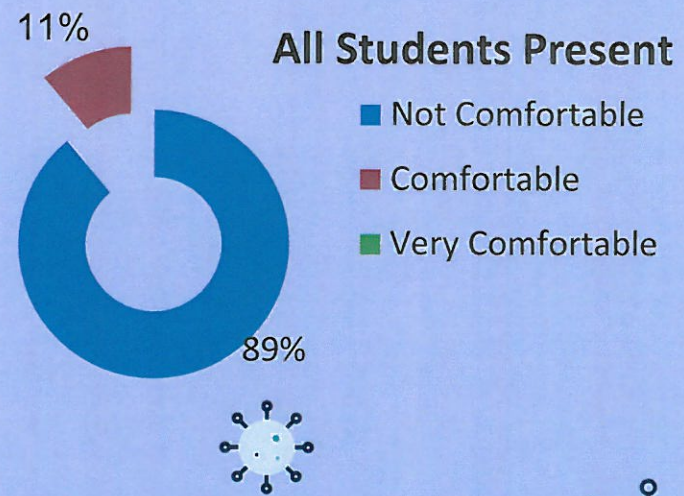
Service Structure



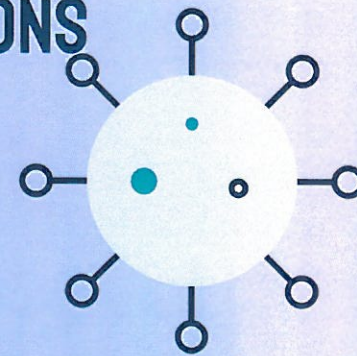
- Traditional - All
- Traditional-Some
- Distance
- Packets
- On-line
- Blended



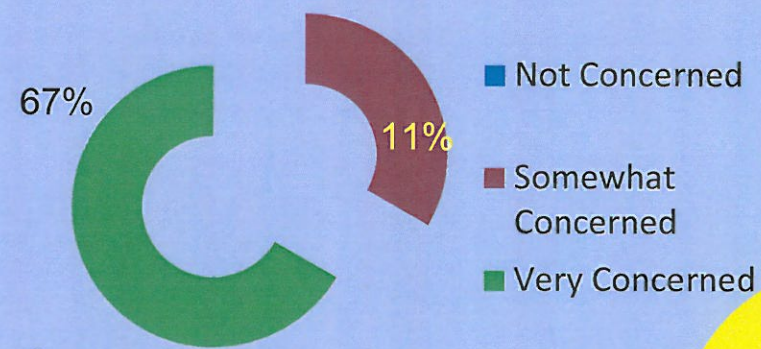
STAFF SERVICE DELIVERY PERCEPTIONS



STAFF SERVICE DELIVERY PERCEPTIONS

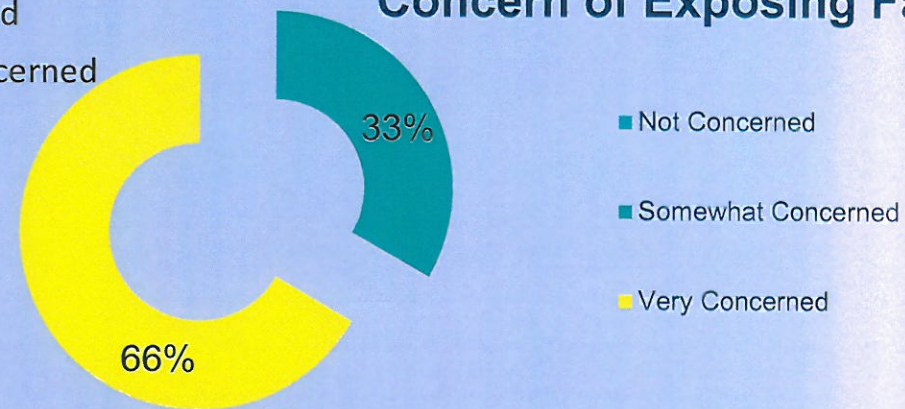


Concern of Contracting

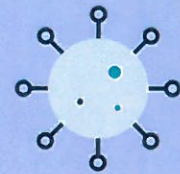


- Not Concerned
- Somewhat Concerned
- Very Concerned

Concern of Exposing Family



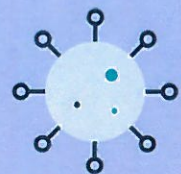
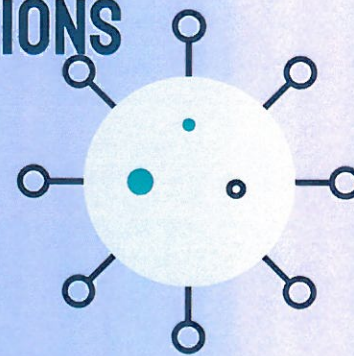
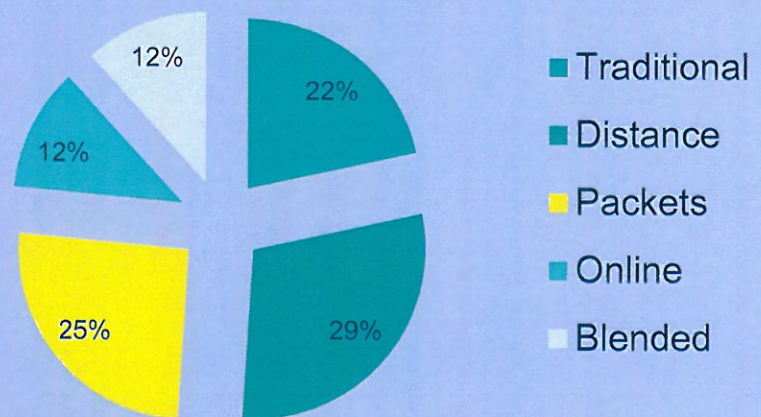
- Not Concerned
- Somewhat Concerned
- Very Concerned



STUDENT SERVICE DELIVERY PERCEPTIONS

93 surveys were sent out and 51 were returned (55%)

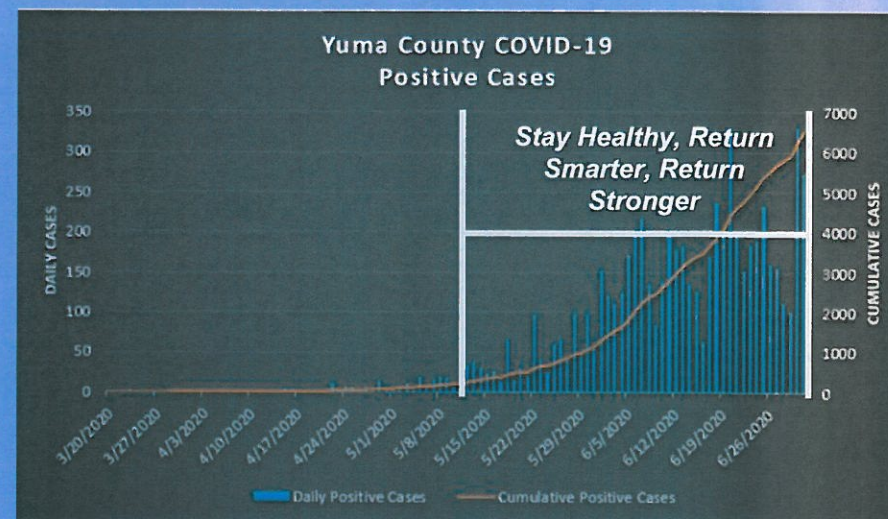
Student Preferences



YUMA, ARIZONA

YUMA COUNTY COVID-19 UPDATE		
CONFIRMED CASES 6,498	DEATHS 98	CASES BY AGE
CASES BY GENDER	YRMC HOSPITALIZATIONS * 126	LESS THAN 20 838 13%
FEMALE 3,393 52%		20-44 3,007 46%
MALE 3,105 48%		45-54 1,013 16%
TOTAL TESTS 36,315	YRMC TOTAL IN ICU * 30	55-64 841 13%
		65+ 799 12%
		UNKNOWN 0 0%
YRMC COVID-19 PATIENTS DISCHARGED * 438	YRMC VENTILATORS *	ARIZONA SURGE LINE TRANSFERS *
	25 IN USE	0 LAST 48 HOURS
	21 AVAILABLE	124 TOTAL
* REPORTED BY YRMC AS OF 8AM JULY 1		

WEDNESDAY, JULY 1 2020



YUMA COUNTY PUBLIC HEALTH SERVICES REPORT- JULY 1, 2020

1. Quarantining inside is preferable to quarantining outside due to escalated dehydration and the potential to eliminate false indications. Full time monitoring is required.
2. Screening location can be established at the front entrance with two screening stations.
3. The kitchen can be used to isolate no more than 4 students if barriers are at least 6' high. Health department has some to borrow temporarily if we can not purchase.
4. Meals will either need to be grab and go in a different area or served in classrooms and socially distanced open areas.
5. It is not possible to keep same group of students together or move teachers from room to room due to student demographics and limited class sections.

YUMA COUNTY PUBLIC HEALTH SERVICES REPORT- JULY 1, 2020

6. It is not possible to alter release times due to limited class sections.
7. All students should enter through the main entrance and exit by exterior doors. The lab should exit by the East door. This will keep movement one directional.
8. Install floor markings to establish directional movement.
9. If a student or staff is identified with a positive case, the school facility closes for a minimum of 5 days to clean, disinfect, and track.
10. Communication systems and notices meet guidelines.
11. Preparations for continued instruction and learning are planned for short-term closures.

CDC DECISION TREE GUIDELINES

Is the school ready to protect children and students at higher risk for severe illness?

Facility:

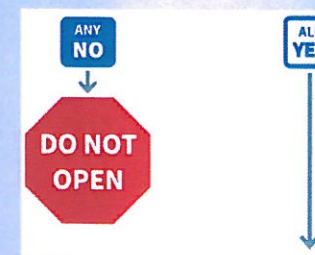
- Kitchen or outside breezeway are the only areas possible to screen and isolate students
- Regular classrooms support 10 to 12 students each
- Special Education supports 4 students.

Student Population:

- Currently have items and equipment to socially distance and sanitize.
- Currently some interest in returning to school.

Challenges:

- Approximately 8% - asthmatic
- 1% immune deficiency
- 6% Diagnosed Panic Disorders



CDC DECISION TREE GUIDELINES

Are you able to screen students and students upon arrival for symptoms and history of exposure?

Challenges With the Kitchen:

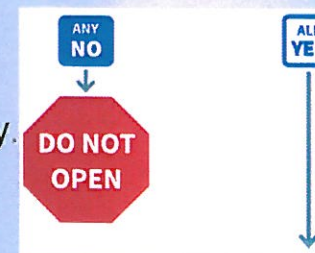
- Sick and well students would be mixed
- Only isolate 3 sick students
- Food safety

Challenges With the Outside:

- Heat
- Monitoring

Other Challenges:

1. If we screen in cars, part of the agency and business driveways would need to be "controlled traffic" for part of the day.
2. Different tracing protocol for YCAT students.
3. "Cool Down" stations need to be adequate enough to eliminate false symptomology.
4. Staff allocation to manage sick students is limited in number and qualifications
5. Timely pickup of ill students.



CDC DECISION TREE GUIDELINES

Are recommended health and safety actions in place?

Healthy Practices

Plans are established for hand washing, face coverings, social distancing and screening

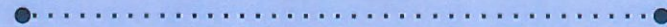


Cleaning, Disinfecting, Ventilation

Plans, schedules and equipment are in place to C/D contact areas 4x daily

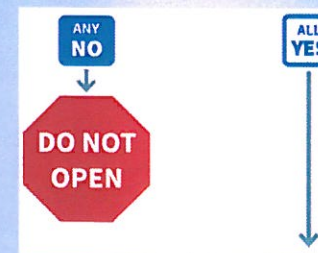


Six Feet



Training of Staff, Students and Community

- Training plan will use trainings from CDC, YCPHS
- Trainings and information will be accessible



CDC DECISION TREE GUIDELINES

Is ongoing monitoring in place?

Policy Adaptations

Policies and communications encourage anyone who is sick to stay home



Monitoring of Sick Students and Staff

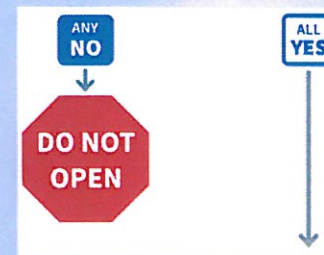
Plans, schedules and equipment are in place to C/D contact areas 4x daily

Currently, staffing does not accommodate long term absences of more than one teacher.

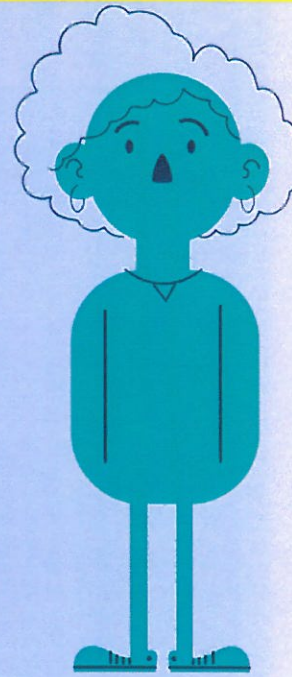
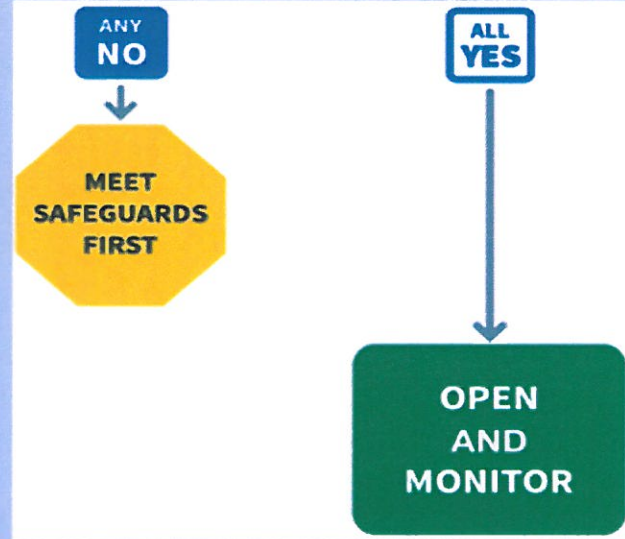
Special Education Teacher also will be serving as principal

School Authority

School leadership will have the ability to close the school and return to distance learning platforms if needed



CDC DECISION TREE GUIDELINES



ADE DECISION GUIDANCE

All Students in Physical Buildings

- LEA Meets CDC Guidelines
- None to minimal local cases
- Implemented COOP plan
- Implemented Communication Plan
- Implemented screening for staff, families and students
- Plan for medically fragile staff and students.

Some Students in Physical Building and Some Remote

- All elements of previous category; except
- Minimal to moderate local cases; and
- Communicated screening, safety, and educational expectations to staff and families.
- Plan is implemented to bridge the digital divide

Distance Learning with Option to Return and Close Again

- LEA is not able to or will lose ability to meet CDC Guidelines
- Substantial local cases
- Implemented Emergency Distance Learning Plan
- Communicated screening, safety, and educational expectations to staff and families.
- Plan is implemented to bridge the digital divide

CURRENT STATUS OF REOPENING

01

Facilities: Continually C/D/S; Tech Infrastructure Improved; Signage is posted; Social Distancing Markings will be put in place; Chairs and tables are stored

02

Enrollment: Agreements for Safety, Instruction, Laptops added; Developing a method of remote enrollment and remote access to orientation videos
><https://www.yuma.org/Registration><

03



Student and Community Safety: Masks, Face Shields, and Hand Washing Stations are ordered; Procedures are in place for screening and sickness of students and staff; Virtual Counseling

04

Policies: Excused absences accommodate lack of documentation; Removed rewards for perfect attendance; New expectations added



05

Instructional Readiness: Ordered - GotoMeeting; G Suite Enterprise; Individual Student Chromebooks
Planned- Fiber optics; Media server; HD Cameras w/Audio; Surface Pros w/ Smart TVs for teachers; PD

06

Communication and Connection: Surveys mailed and made public; Phone calls made; letters mailed; Facebook Notifications



EOC SERVICE DELIVERY OPTIONS



At this time, it is not safe to provide services to all students in a traditional sense.



With careful planning and teaching safe behaviors, the school can provide services to between 50 and 60 students in a traditional manner.

The school can provide all students with the following options:



- Distancing Learning



- Packets with Support



- On-line School



- Blend of four options

SPLIT WEEK BELL SCHEDULE

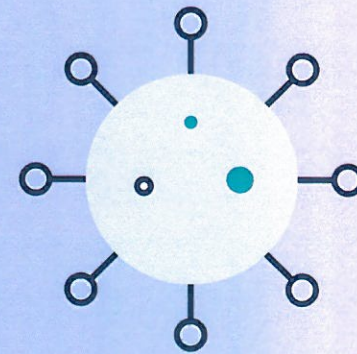
Option separates students equally between the days of the week on a traditional schedule. Friday becomes a Student Support day.

Group A: Monday-Tuesday Group B: Wednesday-Thursday	
ACTIVITY	TIME
Social Distance Breakfast and Student Check-in	7:40 - 8:10
Period 1	8:15 - 9:38
Period 2	9:45 - 11:10
Social Distance Lunch	11:10 - 11:35
Period 3	11:35 - 1:05
Period 4	1:12 - 2:35
Student Support/Planning	2:40 - 4:00

Friday	
ACTIVITY	TIME
Social Distancing Breakfast and Student Check-in	7:40 - 8:10
Student Support	8:15-2:00
Lunch – Grab and Go	2:01
Staff Meetings/Professional Development/Grading and Planning	2:30 – 4:00

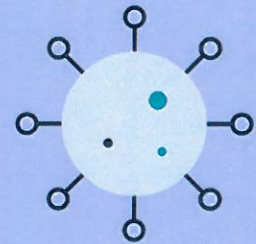


THANKS!



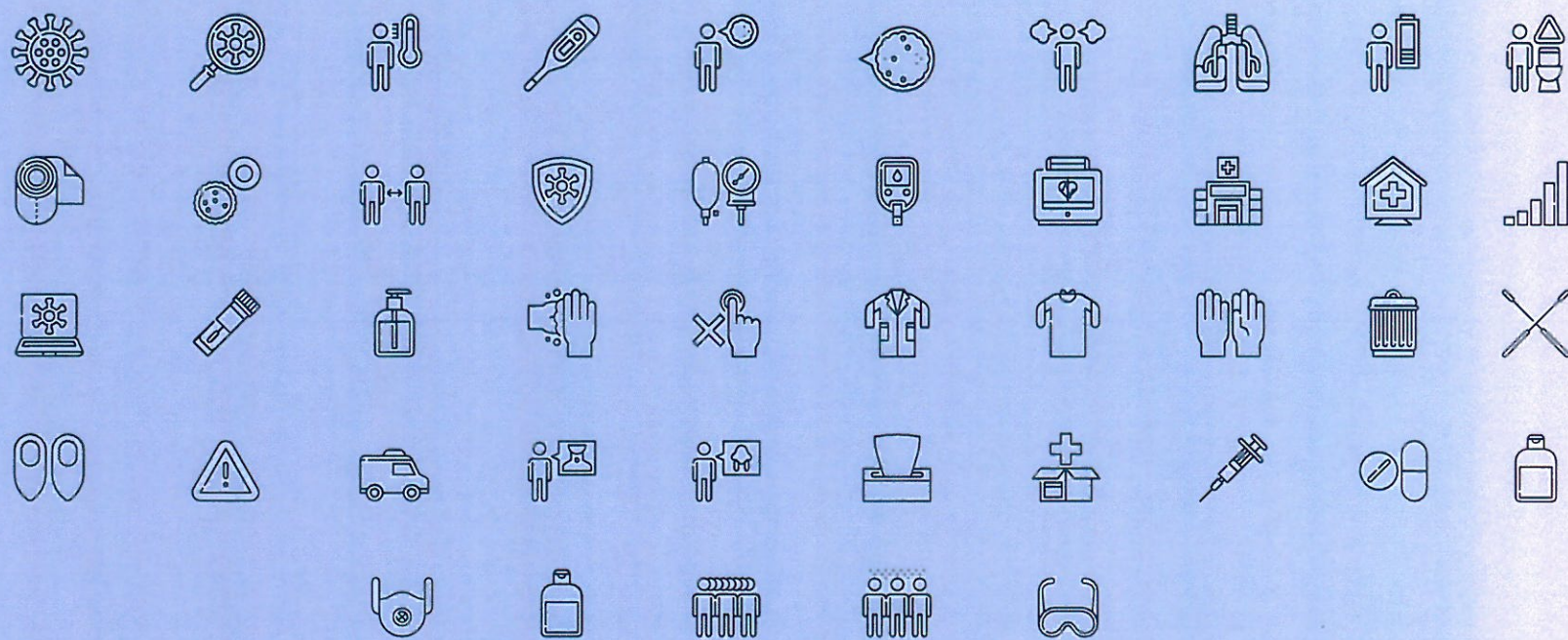
Do you have any questions?

Brian Grossenburg
bgrossenburg@ypic.com
928-329-0990 ext 4001



CREDITS: This presentation template was created by Slidesgo, including icons by Flaticon, and infographics & images by Freepik

ALTERNATIVE RESOURCES



ALTERNATIVE RESOURCES

